

Jim Gill MBE

Emergency Planning Officer

**A LOCAL AUTHORITY'S EXPERIENCE
of FLOOD WARNINGS and
WORKING with the EMERGENCY SERVICES
to build COMMUNITY RESILIENCE**

HISTORY OF FLOOD WARNINGS WITHIN THE SCOTTISH BORDERS



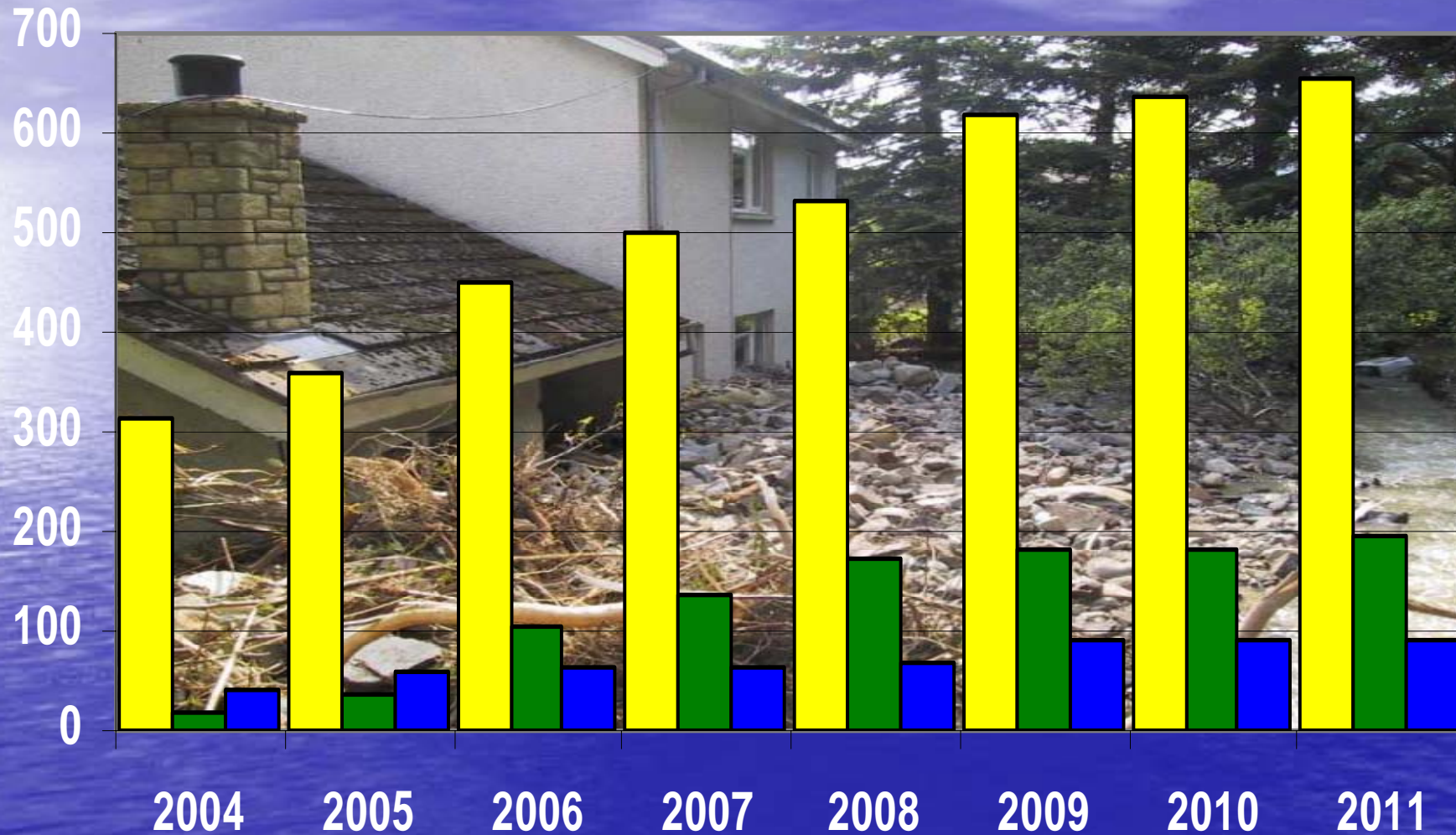
River Tweed Purification Board

Pre 2002 – police warning system

Post 2002 – automated warnings

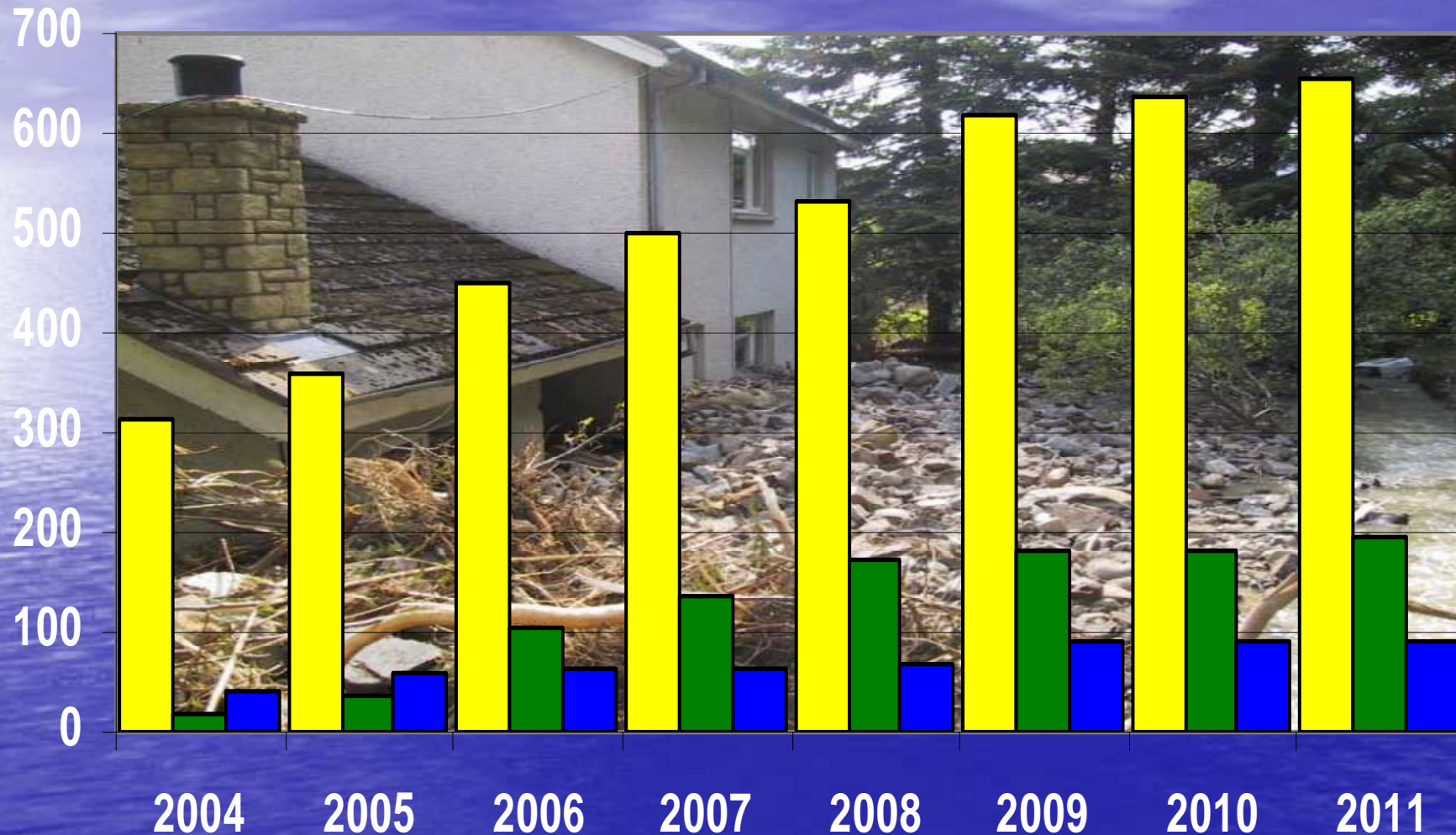
March 2011 – Flood Warnings Direct

FLOOD WARNING GROUP MEMBERS 2004 - 2011



Key ■ All Members ■ Hawick ■ Selkirk

FLOOD WARNING GROUP MEMBERS 2004 - 2011



Key

■ All Members

■ Hawick

■ Selkirk

+ 110%

+ 916%

+ 202%

MULTI-AGENCY APPROACH WITHIN THE SCOTTISH BORDERS



SCOTTISH BORDERS SEVERE WEATHER CONTINGENCY PLAN

MET. OFFICE NATIONAL SEVERE WEATHER WARNING SERVICE

ALERT

Issued more than 24 hours ahead.

WARNING

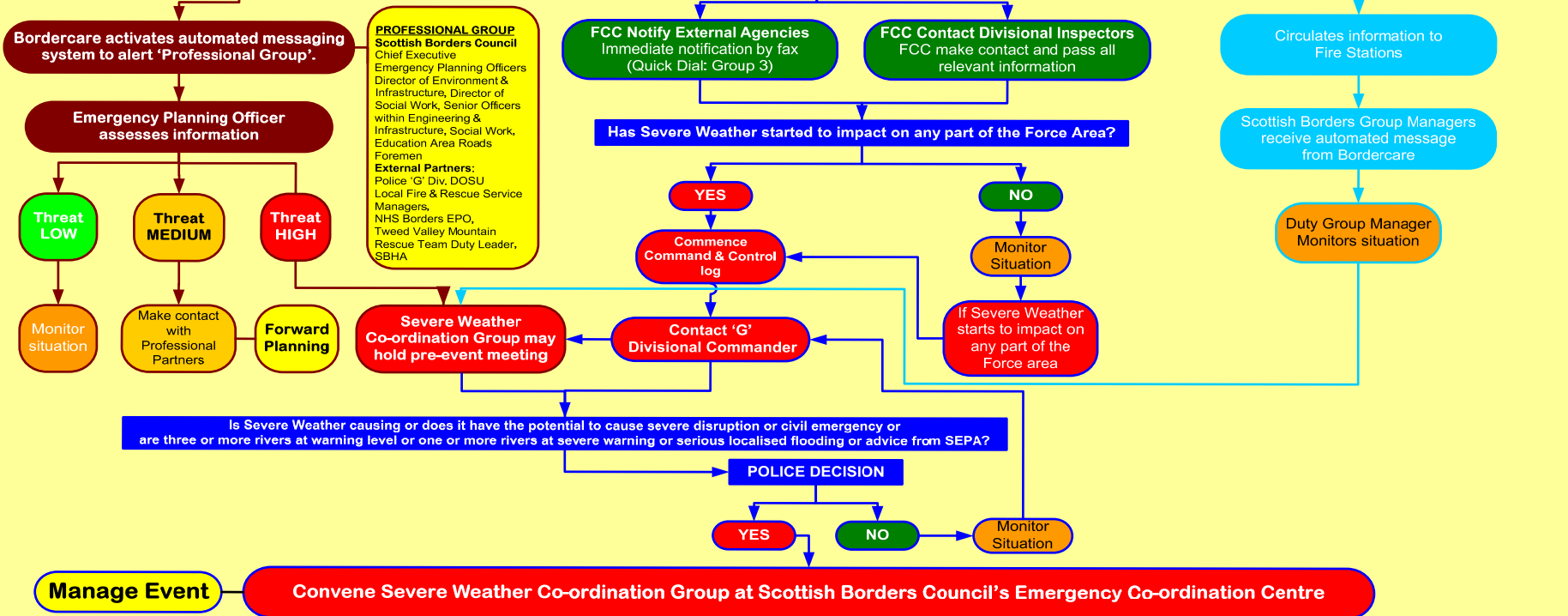
Issued less than 24 hours ahead.

MET. OFFICE FAX

SBC BORDERCARE

L&B POLICE - FORCE COMMUNICATION CENTRE

L&B FIRE & RESCUE SERVICE CONTROL



MULTI-AGENCY APPROACH WITHIN THE SCOTTISH BORDERS



Exercise “Downpour”

SEPA

Police

Fire & Rescue Service

Engineering & Infrastructure

MULTI-AGENCY APPROACH WITHIN THE SCOTTISH BORDERS



SEVERE WEATHER — POLICE PROCEDURES

INTRODUCTION

This aide memoire has been designed to assist you in dealing with any severe weather event within the Scottish Borders and is based on agreed procedures contained within the Scottish Borders Severe Weather Contingency Plan. This plan is available in full on the Scottish Borders Council's website:- <http://www.scotborders.gov.uk/council/departmentsandservices/chiefexecutives/emergencyplanning>

The Scottish Borders has often suffered from severe winter weather but the most frequent event is flooding.

Within the Scottish Borders there are 29 Flood Warning Groups. These are areas known to be at increased risk from flooding and where the Scottish Environment Protection Agency has sensors and gauges which monitor river levels and rainfall so that an approximate 3 hours warning can be issued.

Flood Warnings are delivered by the SEPA Flood Warnings Direct system which uses automated messaging.

The Met. Office National Severe Weather warning Service has two types of warnings:-
ALERT - issued > 24hrs ahead
WARNING - issued < 24hrs ahead

IMPACT MATRIX

LIKELIHOOD	HIGH	VERY LOW	LOW	MED.	HIGH
	MED.	VERY LOW	LOW	MED.	HIGH
	LOW	VERY LOW	LOW	MED.	HIGH
	VERY LOW	VERY LOW	LOW	MED.	HIGH
		IMPACT			

The 'Traffic Light' system means:-

No severe weather is expected	Keep up to date with the latest forecast.
Be aware	Remain alert and keep up to date with latest forecast.
Be prepared	Remain vigilant, keep up to date with the latest forecast and take precautions where possible.
Take action	Remain extra vigilant, keep up to date with the latest forecast. Follow advice and any advice given by authorities and be prepared for extraordinary measures.

SEPA ALERTS / WARNINGS

Messages and Meanings.

FLOOD ALERT
FLOODING IS POSSIBLE, BE PREPARED.
Usually issued up to 24hrs in advance 5-5, 5 days a week
Action: Early warning - remain alert and vigilant and prepared.

FLOOD WARNING
FLOODING IS EXPECTED, IMMEDIATE ACTION REQUIRED.
Issued 3-6hrs in advance where possible. 24/7
Action: Take measures to protect yourself and your property.

SEVERE FLOOD WARNING
SEVERE FLOOD WARNING, DANGER TO LIFE.
Issued whenever severe flooding is likely to cause significant risk to life, destruction of properties or local communities. 24/7
Action: Prepare to evacuate and co-operate with the emergency services.

SCOTTISH BORDERS SEVERE WEATHER CO-ORDINATION GROUP

The following chart highlights the procedures for the 'G' Division Duty Inspector or Duty Senior Officer to consider for a flooding event. The same group would be called out for any other severe weather event and meet at Council HQ (Bunker).

LOTHIAN AND BORDERS POLICE 'G' DIVISION ACTION FLOWCHART FOR FLOOD WARNINGS

Notification of issue of Flood Warning via Scottish Borders Council's AMS Professional Group (by both voice and e-mail messaging)

'G' DIVISION OPERATIONAL SUPPORT UNIT

Check SEPA website <http://www.sepa.org.uk/flooding> or with Bunkers to establish river areas involved.

Check / Notify / Assess

Administrative / Support

Operational / Support

Consider putting on standby

Consider establishing

3 Rivers on more rivers at warning level
 1 One or more rivers at severe warning level
 2 Periodically localised flooding
 3 Advice from SEPA

BY CONTACTING SCOT BORDERS COUNCIL'S EMERGENCY PLANNING SECTION

PRE-MEETINGS

Usually early discussions take place between the Divisional Duty Inspector or Senior Officer and the council's Emergency Planning Section which may result in a 'pre-meeting' of core members of the Severe Weather Co-ordination Group to discuss pre-event actions which may lessen the need to call out the Group during an event.

SEVERE WEATHER — POLICE PROCEDURES

CORE GROUP MEMBERS
Police; Fire & Rescue; SBC's Emergency Planning, Social Work, Environment & Infrastructure and Communications but may also be supplemented by Education, NHS Borders and utilities etc. as necessary.

POLICE CO-ORDINATOR

ROLE:
Overall co-ordination of multi-agency response.

ASSESS:
The information available from SEPA, Met. Office and Council Departments, situation reports from officers on the ground along with the number and nature of calls from the public.

CONSIDER:
The need to place the Severe Weather Co-ordination Group (SWCG) on stand-by or whether to call it out. (Council EPO will notify non-police members)

SEVERE WEATHER CO-ORDINATION GROUP:
Chair the Group (Standard Agenda available)
 Consider:- Media Response; Public Information; Additional Resources; Escalating the Group to Strategic Level; Need to establish Forward Control Point(s); Need to implement Major Incident Plan; Need for Rest Centres; Any implications for schools/school transport; Need to establish a C & C link in the Emergency Centre.

OTHER CONSIDERATIONS:
Safety and Welfare of staff & arrangements to sustain a prolonged response.

POST EMERGENCY PHASE:
Agree hand-over process to Chief Executive for Recovery Phase.

MINOR OR LOCALISED FLOODING

2.1 Minor or Localised Flooding can be defined as flooding or the threat of flooding of properties on a limited scale and is likely to be caused by:-

- Blockage of drains or sewers by debris
- Escape from a sewer
- Escape from a main water pipeline
- Localised heavy rainfall

2.2 Action:
Localised and minor flooding can be dealt with at operational level through direct contact between agencies such as:

- Lothian and Borders Police
- Scottish Water (SW) (sewer mains and sewers)
- Scottish Power
- Engineering & Infrastructure of Scottish Borders Council
- BEAR Scotland, (Trunk Roads Authority)

Contacting Engineering & Infrastructure

Office Hours (Appropriate Area Risk Office)

Out of Hours (Summer) Contact Centre (Bunkers)

Out of Hours (Winter) Winter Control Room (Bunker Complex)

Telephone Numbers
Contact numbers for all the agencies referred to above are contained in the SBC Emergency Contacts Directory.

NOTE: If the source of flooding is unknown or uncertain both Scottish Water and SW should be contacted to prevent any delay in response

Procedures for FORCE COMMUNICATIONS CENTRE

The following chart details the procedures to be followed by the staff within the Force Communications Centre.

FORCE COMMUNICATIONS CENTRE ACTIONS FOR FLOOD EVENTS IN 'G' DIVISION

Information from the Met. Office

Information from SEPA

Information from other sources

FORCE COMMUNICATIONS CENTRE

Consider operational impact and other 'G' division duties (e.g. major incidents, public information, etc.)

Localised Flooding Consider: Schools, Children, Council & Local Residents (e.g. in the Bunkers) & Public Information

Flood Warning issued for one or more rivers

Update 'G' Division Duty Inspector (Duty Senior Officer) via SEPA Flood Warning Direct (SEPA Flood Warning Direct)

Maintain liaison with SEPA

FLOODGATE PROCEDURES

FLOOD GATES & GALASHIELS MILL LAKE INLET - PROCEDURES

BORDERCARE

ON RECEIPT OF A FLOOD WARNING FOR THE JEDBURGH FLOOD GATE (Blackburn Road)

ON RECEIPT OF A FLOOD WARNING FOR THE GALASHIELS FLOOD GATE (Blackburn Road)

ON RECEIPT OF A FLOOD WARNING FOR THE HAWICK FLOOD GATE (The Gateway to Lanes)

JEDBURGH GALASHIELS HAWICK

Flood Gate (Blackburn Road) Flood Gate (Blackburn Road) Mill Lake (Blackburn Road)

INFORM SCOTTISH BORDERS COUNCIL'S ENGINEERING & INFRASTRUCTURE DEPARTMENT to have the Flood gates closed and if Galashiels, the Mill Lake inlet closed

SUMMER WINTER SUMMER

DURING OFFICE HOURS 01825 825676

OUT OF OFFICE HOURS DUTY STANDBY FOREMAN

WHEN WATER CONTROL OPERATIONAL 24/7 01825 825676

ENGINEERING & INFRASTRUCTURE DEPARTMENTS Once the threat of flooding has dissipated, the Flood gates and inlet valves should be opened.


05/11

COUNCIL POLICY

Sandbag Stores Located Throughout the Scottish Borders



*This store is managed by the Selkirk Flood Response Group



Flood Protection for Your Home

Traditional sandbags have a number of limitations and may not be the best option. Modern synthetic sandbags are much easier to store, lighter to handle and can be purchased from Council Contact Centres.

Floodgates that expand to seal doorways are more effective and easy to manage than sandbags. There are a number of companies manufacturing and selling this type of product.


The air vents in your walls need to be sealed at times of flood risk but must be kept open at other times - air vent covers that can quickly be fitted to prevent flooding are commercially available.

You can find advice about protecting your home and details of companies who sell approved flood protection products at www.sepa.org.uk

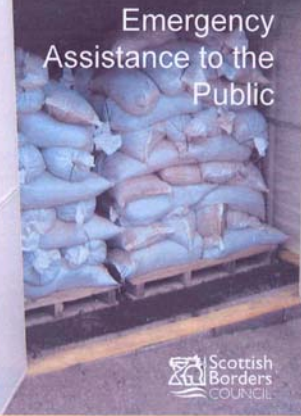
Information During a Flood

You can get up to date information by telephoning Floodline on 0845 988 1188 or via the Scottish Environment Protection Agency Web-Site www.sepa.org.uk/flooding.aspx. Listening to Local radio and TV stations will provide you with weather and other local information.

REMEMBER
That the telephone lines to the emergency services and Council will be very busy during an emergency.
Only telephone them if you really need to



Emergency Planning Section, Scottish Borders Council
Newtown St Boswells
Tel: 01835 824006



EMERGENCY ASSISTANCE TO THE PUBLIC
Section 84 of the Local Government
Scotland Act 1973

1 Background

1.1 This leaflet sets out the policy of Scottish Borders Council in relation to the extent of short term assistance to be provided to householders and businesses to avert or alleviate the effects of flooding or other emergencies as allowed by the provisions of Section 84 of the Local Government Scotland Act 1973.

1.2 The responsibility for protection of private property in the event of a flood lies with individual owners and not the Council or any other agency. The Council does however have permissive powers in relation to emergencies and where appropriate will use these to support local communities.

1.3 During or in anticipation of an emergency requiring the activation of the Scottish Borders Major Incident Plan or the Scottish Borders Severe Weather Plan, the Council will:

- ensure protection of life by providing all available support and assistance to the emergency services and by securing the safety of the road network.
- In addition, during such an incident Scottish Borders Council will as resources permit, respond to reasonable requests for emergency assistance from the public.



1.4 That assistance will be subject to the following restrictions:

- It is never appropriate to put people at risk to protect property and for that reason Council staff must continue to comply with established Health and Safety at Work procedures.
- In the case of flooding, the assistance will be limited to emergency action to prevent or mitigate the immediate effects of flooding. Such assistance will normally be confined to actions external to a property and should not encroach into areas normally covered by household/business insurance.

1.5 The Council will support the development of 'Self-Help' groups covering communities or parts of communities identified as being at increased risk.

NOTE

If you would like more information on developing a Community 'Self-Help' Group contact the Council's Emergency Planning Officer on 01835 825056 or by email at eps@scotborders.gov.uk



2 Sandbags

2.1 The time frame for providing assistance in the form of sandbags during a flooding event can be very short and in many cases demand will exceed the capacity of the immediately available resources of the Council. It is therefore important that the Council has a clear policy that takes these time and resource limitations into account.

2.2 In a flooding emergency the Council will take a strategic approach to the use of sandbags. That means that deployment will be prioritised on the basis of the following list:

- To prevent loss of life or serious injury
- Maintaining access for emergency vehicles
- Securing the safety of the roads network
- Protecting key community facilities
- Protecting a number of residential properties
- Protecting a number of business/commercial properties
- Protecting an individual residential property
- Protecting an individual commercial property



2.3 In order to support this policy 'supplies of ready to use sandbags along with supplementary supplies of empty sandbags and sand will be held at each of the Council's road depots.

2.4 Resource limitations mean that no guarantee can be given that all requests for assistance will be met or that sandbags can be delivered by Council staff within a specific time-scale.

2.5 Limited supplies of sandbags will be stored in strategically located 'Self-Help' sandbag stores - See Map overleaf for locations.

2.6 To encourage householders and business to take action to prepare in advance, limited supplies of synthetic sandbags will be available in Council Contact Centres for purchase at cost price.

2.7 It is acknowledged that limited short term assistance is sometimes provided during smaller more localised incidents at the discretion of local managers. This policy is not intended to discourage such actions but local managers must ensure compliance with the restrictions outlined at 1.4.

(Footnotes)

*At Risk Areas are those covered by the existing Scottish Environment Protection Agency warning arrangements and any other area identified by Scottish Borders Council as being at increased risk from flash flooding.
†Filled sandbags have a limited shelf life and this restricts the numbers than can be stored

SELF – HELP GROUPS



Presently 6 Flood Self-help groups:-

Hawick)
Newcastleton) <u>each different</u>
Peebles) assist with support,
Eddleston) equipment,
Eyemouth) & information
Selkirk)

The future – Community Resilience Groups

SELF – HELP GROUPS



FLOOD PROTECTION PRODUCTS DISCOUNT SCHEME



Flood Protection Products available through Discount Scheme



How the Discount Scheme Works

The scheme is available to anyone, private householders or businesses, whose property is at risk from flooding.

Scottish Borders Council will purchase selected products at cost price and make them available with an additional subsidy against each product. The maximum subsidy for any single householder/business is limited to £650. *[Prices are subject to available funding for the scheme.]*

In the event of the £650 maximum being reached then all products over this limit will be sold at cost price.

For further information please contact: Emergency Planning Section, Council HQ, Newtown St Boswells, Melrose TD6 0SA Telephone 01835 825056

Floodgate Ltd.

www.floodgate.ltd.uk/products/vent.html



Step 1: Horizontal expansion



Step 2: Vertical expansion



Step 3: Floodgate in place

Door guard

Stanchion extension



Vent guards



Floodgate Products	Size	RRP	Cost Price	Grant available off cost price	Discount Price Ex.Vat	Saving on RRP
Extra Small Floodgate	670 - 760	£250.00	£215.00	£120.00	£95.00	62%
Standard Floodgate	735 - 890	£282.60	£230.00	£130.00	£100.00	64%
Regular Floodgate	890 - 975	£330.43	£275.00	£151.00	£124.00	63%
Medium Floodgate	975 - 1405	£386.95	£337.17	£207.17	£130.00	66%
Large Floodgate	1175 - 1405	£426.00	£373.64	£223.64	£150.00	65%
XL Floodgate	1370 - 1520	£529.56	£430.00	£245.00	£185.00	65%
XXL Floodgate	1520 - 1700	£680.00	£604.35	£369.35	£235.00	65%
Stanchion		£300.00	£287.50	£177.50	£110.00	63%
Small Vent cover		£57.50	£30.00	£10.00	£20.00	65%
Large Vent cover		£69.00	£40.00	£15.00	£25.00	64%

Flood Protection Products available through Discount Scheme



Ventguard Products Ltd

www.ventguard.org



The first source of flooding is usually through airbricks like this



Step 1. Insert rod through Ventuard and the airbrick.



Step 2. The catch on the rod grasps the back of the airbrick.



Step 3. Turn the handle to fasten the Ventguard against the brick.

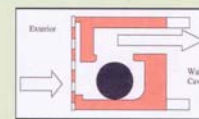


Available in two sizes

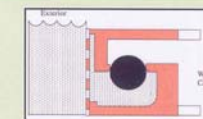
	RRP	Cost Price	Grant available off cost price	Discount Price Ex.Vat	Saving on RRP
Small Vent cover	£45.00	£38.00	£20.00	£18.00	60%
Large Vent cover	£45.00	£38.00	£20.00	£18.00	60%

Eco Coverage Technologies

<http://www.ecocoverage.co.uk/>



RRP



Cost Price

	RRP	Cost Price	Grant available off cost price	Discount Price Ex.Vat	Saving on RRP
Self-closing vent cover	£80.00	£45.00	£15.00	£30.00	63%

Floodsax

www.edslimited.co.uk/Products/FloodSax



Can be purchased at Council Contact Centres

Description	Cost Price	Grant	Discount Price Ex.vat.	Saving on RRP
Vacuum sealed pack of 5	£32.50	£17.50	£15.00 Ex.vat.	56%

Place 1 x Floodsax into a container. Add approx. 20ltrs of water & leave to soak for 3 minutes



Use the expanded Floodsax



MAXIMUM GRANT NOT TO EXCEED £650 PER PREMISE

Prices are subject to available funding for the scheme

FLOOD PROTECTION PRODUCTS DISCOUNT SCHEME



Total cost of orders (Retail Price)	£86,406.20
Total purchase cost to SBC (Cost Price)	£66,380.02
Total cost to customers	£36,159.80
Final Cost to SBC	£30,220.22
124 Properties (18%) Average cost to SBC per property	£243.71

